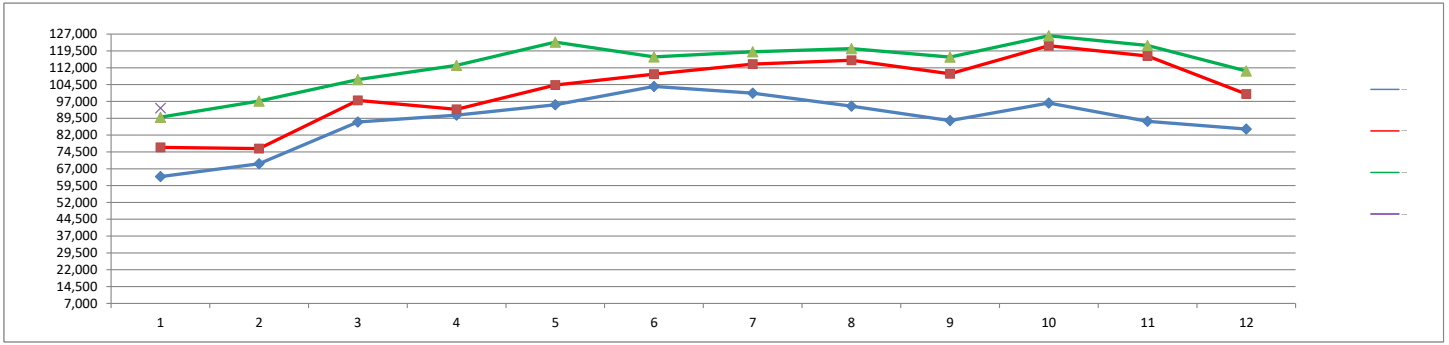


COLUMBIA METROPOLITAN AIRPORT	Month			Year-to-Date		
	Jan-25	Jan-24	% Change	2025	2024	% Change
<b>ENPLANED PASSENGERS</b>						
AMERICAN EAGLE	20,471	21,846	-6.29%	20,471	21,846	-6.29%
UNITED EXPRESS	5,451	4,925	10.68%	5,451	4,925	10.68%
DELTA	19,141	16,035	19.37%	19,141	16,035	19.37%
FBO CHARTERS	298	282	5.67%	298	282	5.67%
<b>Enplaned Passenger Total</b>	<b>45,361</b>	<b>43,088</b>	<b>5.28%</b>	<b>45,361</b>	<b>43,088</b>	<b>5.28%</b>
<b>LANDED WEIGHT (1,000 LB UNITS)</b>						
AMERICAN EAGLE	25,945	28,745	-9.74%	25,945	28,745	-9.74%
UNITED EXPRESS	6,755	6,895	-2.03%	6,755	6,895	-2.03%
DELTA	24,652	19,424	26.92%	24,652	19,424	26.92%
<b>Subtotal</b>	<b>57,352</b>	<b>55,064</b>	<b>4.16%</b>	<b>57,352</b>	<b>55,064</b>	<b>4.16%</b>
MOUNTAIN AIR CARGO	1,600	1,742	-8.15%	1,600	1,742	-8.15%
FEDERAL EXPRESS	6,632	5,246	26.42%	6,632	5,246	26.42%
UNITED PARCEL SERVICE	22,020	18,868	16.71%	22,020	18,868	16.71%
AIR CARGO CARRIERS	522	626	-16.61%	522	626	-16.61%
<b>Subtotal</b>	<b>30,774</b>	<b>26,482</b>	<b>16.21%</b>	<b>30,774</b>	<b>26,482</b>	<b>16.21%</b>
<b>Landed Weight Total</b>	<b>88,126</b>	<b>81,546</b>	<b>8.07%</b>	<b>88,126</b>	<b>81,546</b>	<b>8.07%</b>
<b>LANDINGS</b>						
AMERICAN EAGLE	410	461	-11.06%	410	461	-11.06%
UNITED EXPRESS	114	115	-0.87%	114	115	-0.87%
DELTA	256	202	26.73%	256	202	26.73%
<b>Subtotal</b>	<b>780</b>	<b>778</b>	<b>0.26%</b>	<b>780</b>	<b>778</b>	<b>0.26%</b>
MOUNTAIN AIR CARGO	34	37	-8.11%	34	37	-8.11%
FEDERAL EXPRESS	24	17	41.18%	24	17	41.18%
UNITED PARCEL SERVICE	71	53	33.96%	71	53	33.96%
AIR CARGO CARRIERS	20	24	-16.67%	20	24	-16.67%
<b>Subtotal</b>	<b>149</b>	<b>131</b>	<b>13.74%</b>	<b>149</b>	<b>131</b>	<b>13.74%</b>
<b>Landings Total</b>	<b>929</b>	<b>909</b>	<b>2.20%</b>	<b>929</b>	<b>909</b>	<b>2.20%</b>
<b>ENPLANED FREIGHT / CARGO</b>						
MOUNTAIN AIR CARGO	77	72	6.94%	77	72	6.94%
FEDERAL EXPRESS	523	441	18.59%	523	441	18.59%
UNITED PARCEL SERVICE	696	868	-19.82%	696	868	-19.82%
AIR CARGO CARRIERS	44	54	-18.52%	44	54	-18.52%
<b>Enplaned Cargo Total</b>	<b>1,340</b>	<b>1,435</b>	<b>-6.62%</b>	<b>1,340</b>	<b>1,435</b>	<b>-6.62%</b>



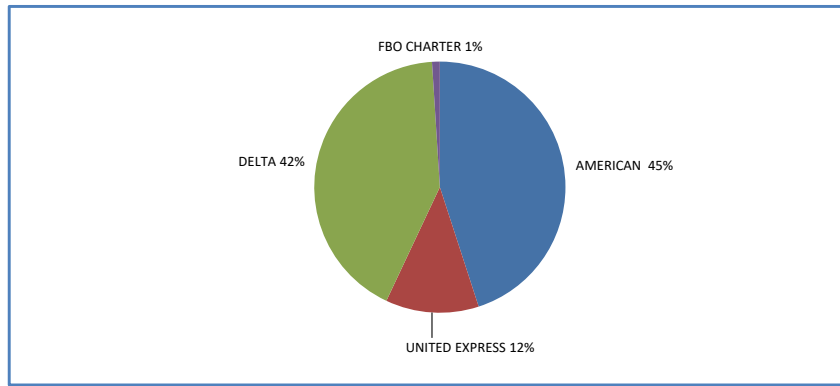
**MONTHLY TOTAL PASSENGERS  
2022 - 2025**



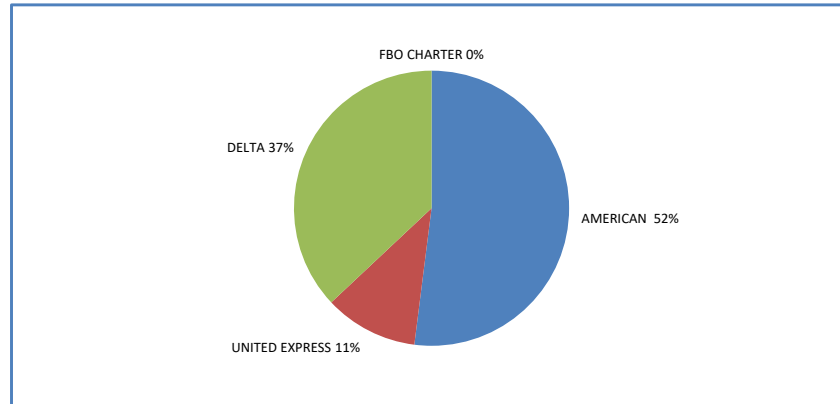
	Jan	Feb	Mar	Apr	May	Jun	Jul	Aug	Sep	Oct	Nov	Dec	Grand Total
2022	63,495	69,231	87,824	90,857	95,499	103,686	100,656	94,864	88,447	96,272	88,138	84,661	1,063,630
2023	76,515	75,980	97,489	93,507	104,267	109,152	113,589	115,318	109,317	121,817	117,221	100,315	1,234,487
2024	89,973	97,139	106,723	113,063	123,449	116,854	119,114	120,555	116,749	126,263	121,961	110,531	1,362,374
2025	94,003												94,003

**YEAR - TO - DATE MARKET SHARE BY CARRIER**

**2025**



**2024**



**2023**

